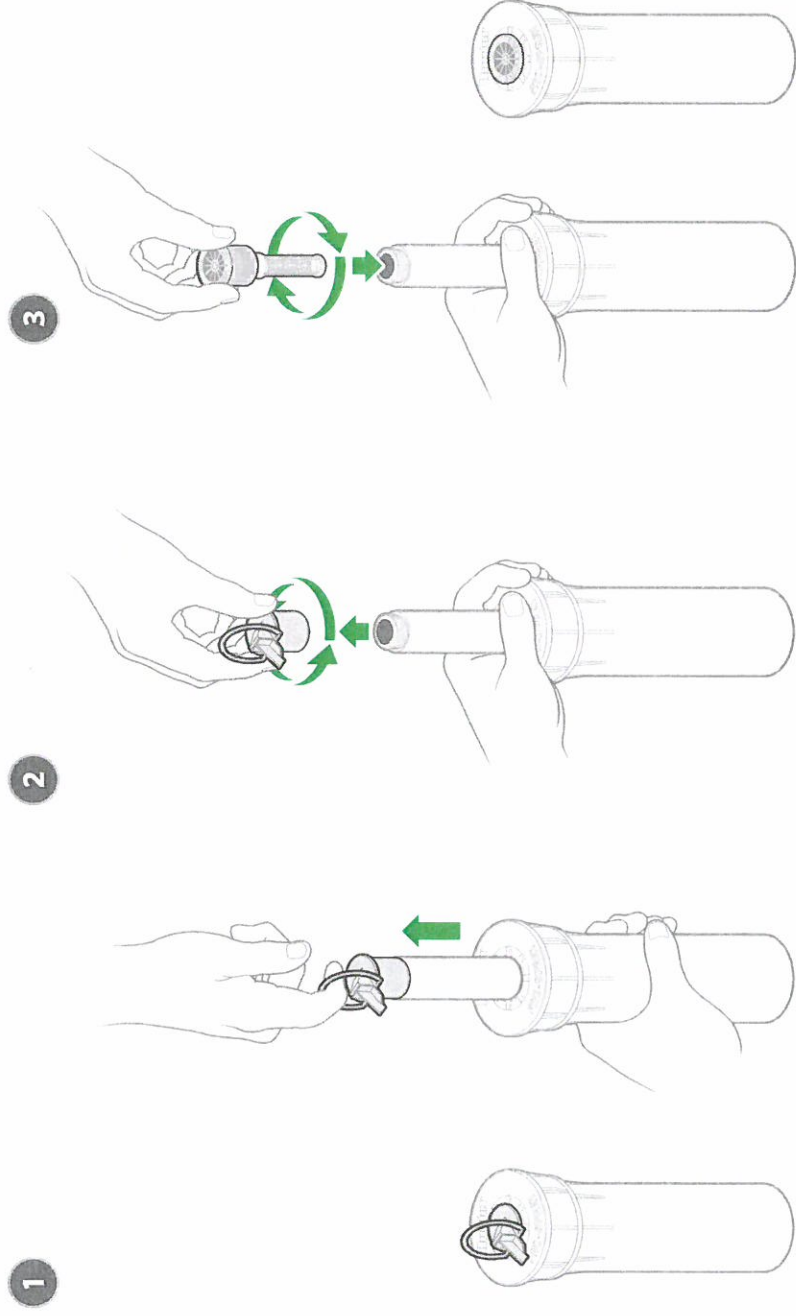
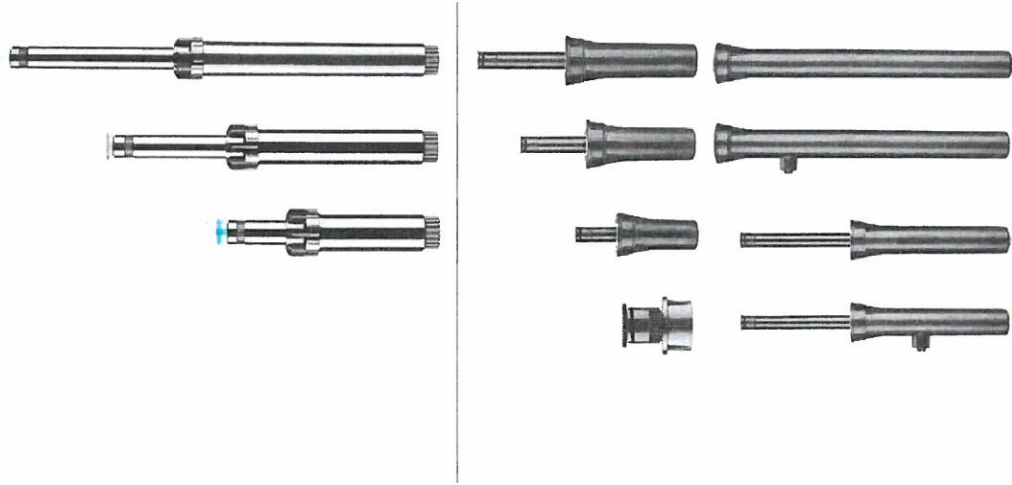
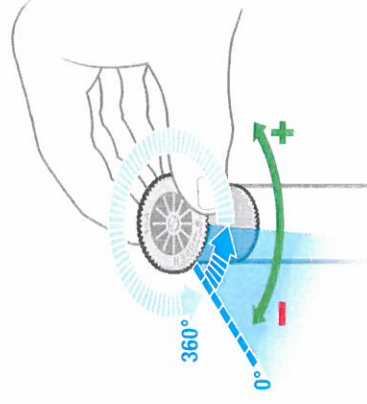
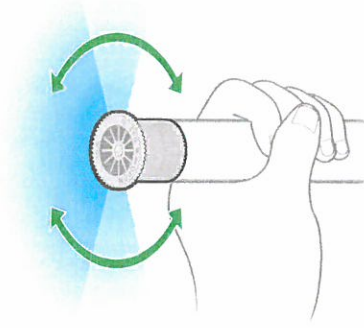
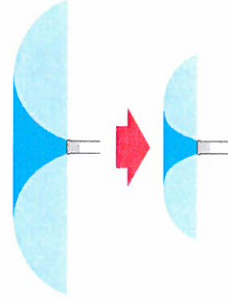
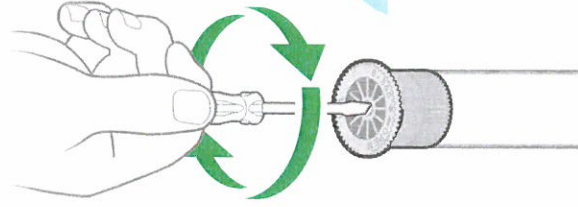
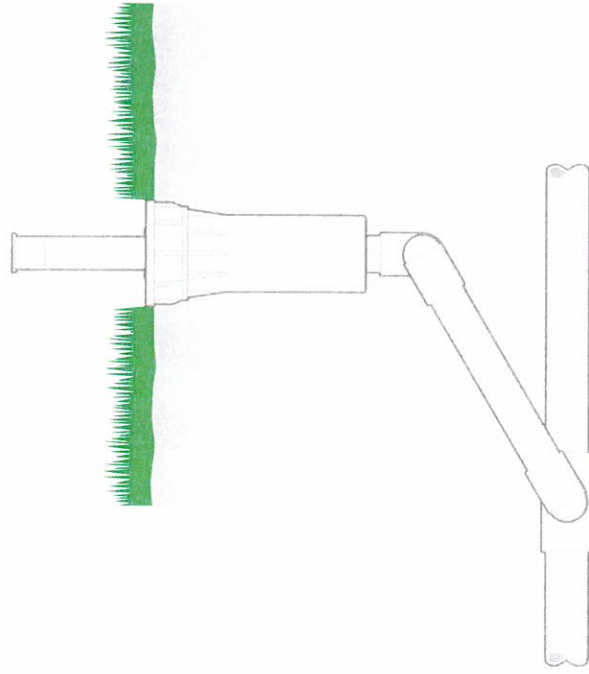


PS ULTRA / PRO-SPRAY®







10A



1.0-3.0 Bar
100-300 kPa
20-40 PSI



0.7-9.5 l/m
0.2-2.3 GPM



12A



1.0-3.0 Bar
100-300 kPa
20-40 PSI



0.7-13.4 l/m
0.3-3.4 GPM



15A



1.0-3.0 Bar
100-300 kPa
20-40 PSI



1.3-18.0 l/m
0.4-4.5 GPM



17A



1.0-3.0 Bar
100-300 kPa
20-40 PSI



1.7-21.7 l/m
0.5-5.5 GPM



